

SUMMARY OF FREMONT COUNTY ORDINANCE NO. 2013- 01

Fremont County Ordinance No. 2013-01, which was adopted by the Board of County Commissioners of Fremont County, Idaho on the 29<sup>th</sup> day of October, 2012, may be summarized for publication as follows:

AN ORDINANCE ADOPTING AN OFFICIAL ROAD MAP FOR FREMONT COUNTY, IDAHO.

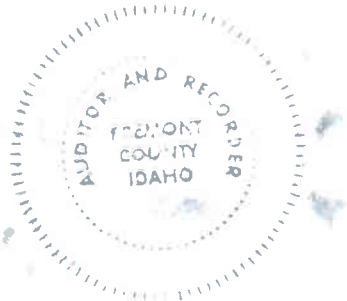
A copy of the full text of this ordinance may be obtained or reviewed at the office of the Fremont County Clerk, which is located at 151 West 1<sup>st</sup> North, Room 12, St. Anthony, Idaho, during regular business hours 8:00 a.m. to 5:00 p.m.

CLERK'S STATEMENT

I, ABBIE MACE, the County Clerk of Fremont County, Idaho hereby state that I have read the foregoing Summary of Fremont County Ordinance No. 2013- 01 , which summary is true and complete and provides adequate notice to the public.

Dated this 29<sup>th</sup> day of October, 2012.

Abbie Mace  
ABBIE MACE  
COUNTY CLERK



Microfilm No. 541144  
Day Nov 20 12  
At 3:30 O'Clock PM  
ABBIE MACE  
FREMONT CO RECORDER  
Fee \$ 8 Deputy  
Recorded at Request of Abbie Mace

ORDINANCE 2013-01

AN ORDINANCE ADOPTING AN OFFICIAL ROAD MAP FOR FREMONT COUNTY, IDAHO.

WHEREAS, Idaho Code § 40-202, requires Fremont County to adopt an official County Road Map; and

WHEREAS, the Fremont County Road Map is meant to be the official map of public roadways in Fremont County; and

WHEREAS, the Public Works Director in and for Fremont County, Idaho, has prepared an official County Road Map; and

WHEREAS, the Board of County Commissioners deems it to be in the best interest of Fremont County, Idaho to adopt an Official Road Map for Fremont County, Idaho.

NOW THEREFORE, BE IT ORDAINED BY THE BOARD OF COMMISSIONERS OF FREMONT COUNTY, IDAHO, AS FOLLOWS:

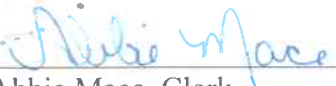
1. The Fremont County official Road Map, as attached hereto and incorporated herein by reference, is hereby adopted, and all roads in Fremont County, Idaho shall adhere to and be identified by said map.
2. Future roads that may need to be added to the official Road Map will be added without having to amend this ordinance.
3. This ordinance shall take precedence over any and all conflicting ordinances, resolutions, or other law governing roadway maps in Fremont County, Idaho.
4. This ordinance shall be in full force and effect upon publication.

PASSED this 29<sup>th</sup> day of October, 2012, by the Board of Commissioners of Fremont County, Idaho.

BOARD OF COUNTY COMMISSIONERS  
Fremont County, Idaho

  
\_\_\_\_\_  
Ronald "Skip" Hurt, Chairman



ATTEST:  
  
\_\_\_\_\_  
Abbie Mace, Clerk



# Fremont County Official Road Map

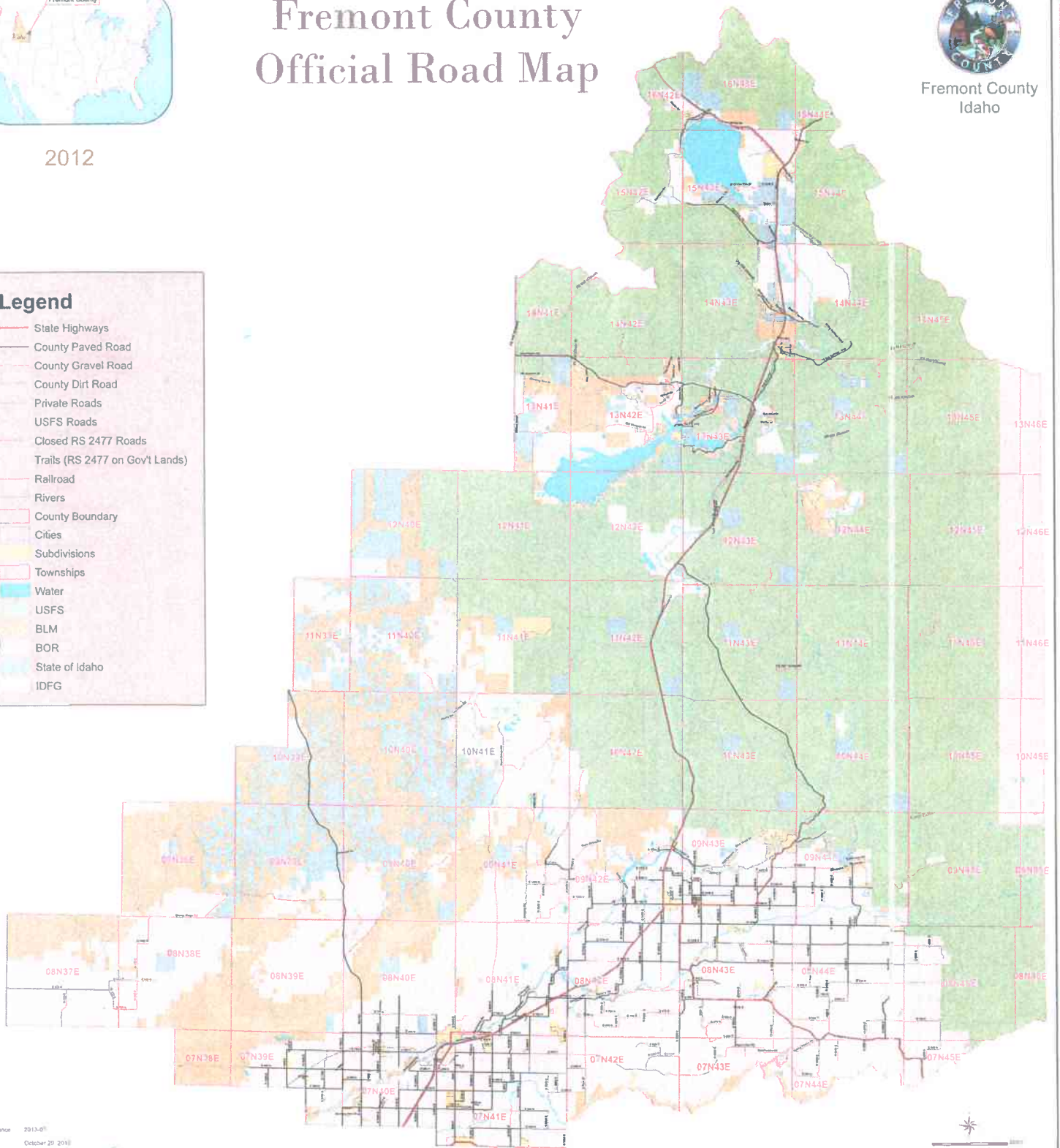


Fremont County  
Idaho

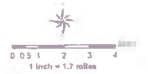
2012

## Legend

- State Highways
- County Paved Road
- County Gravel Road
- County Dirt Road
- Private Roads
- USFS Roads
- Closed RS 2477 Roads
- Trails (RS 2477 on Gov't Lands)
- Railroad
- Rivers
- County Boundary
- Cities
- Subdivisions
- Townships
- Water
- USFS
- BLM
- BOR
- State of Idaho
- IDFG



Ordinance 2013-01  
 Dated October 20 2013  
 Commissioner Hunt  
 Commissioner Miller  
 Commissioner Stoddard



Printed October 25, 2013 By: Steve Hansen  
 © 2013 Fremont County, Idaho. All rights reserved.  
 Fremont County hereby disclaims any liability, expressed or implied, for any use of the information contained herein. Fremont County assumes no liability for errors, omissions, or other inaccuracies that may appear hereon, whether or not such errors or omissions are caused by any person or persons, and whether or not such errors or omissions are caused by any person or persons, and whether or not such errors or omissions are caused by any person or persons.