

RESOLUTION NO. 2012-6

A RESOLUTION OF FREMONT COUNTY, IDAHO, ADOPTING NEW ELECTORAL PRECINCT BOUNDARIES FOLLOWING THE RECEIPT OF THE YEAR 2010 DECENNIAL CENSUS COUNT; PROVIDING FOR SEVERABILITY; AND MAKING OTHER PROVISIONS RELATED TO THE SUBJECT.

WHEREAS, redistricting is the process of redrawing the boundaries for the districts to best meet the one-person/one-vote requirement; and

WHEREAS, the history of redistricting begins with the United States Constitution and its requirement that members of the United States House of Representatives be apportioned among the states according to the number of persons in each state as determined by an actual enumeration every ten (10) years; and

WHEREAS, beginning with the first census in 1790, there has been a census every ten (10) years for an unbroken series of twenty-three (23) nationwide population counts, as the census provides the statistical basis for state-drawn congressional district lines, almost all state legislative redistricting plans, most local redistricting measures and may distribution formulas for allocating revenues and government funds; and

WHEREAS, upon review of the 2010 census data, it appears that a population imbalance exists requiring the redistricting of the County Commissioner Districts and voter precincts; and

WHEREAS, the Fremont County Board of County Commissioners has certain responsibilities for redistricting under federal and state law, including but not limited to, Amendments 14 and 15 of the United States Constitution, and the Voting Rights Act 42 U.S.C.A. §§ 1973 and 1973c; and

WHEREAS, the Fremont County Board of County Commissioners is authorized and required by Idaho Statute § 34-301 to revise its precinct boundaries to correct population imbalances shown by a federal census; and

WHEREAS, the Fremont County Board of Commissioners consists of three (3) members nominated and elected from districts; and

WHEREAS, the electoral precincts are subject to the constitutional and statutory requirement of one-person/one-vote; and

Microfilm No. **536860**  
At 15th Day DEC 20 11 M  
At 14th O'Clock 0 M  
ABBIE MACE  
FREMONT CO RECORDER  
Fee \$ 0 Recorded at Request of Clerk ABBIE MACE

WHEREAS, the Fremont County Board of County Commissioners have recently received and reviewed the population of the precincts as determined by the 2010 federal census; and

WHEREAS, the Fremont County Board of County Commissioners had determined that there is a substantial inequality of population among the precincts and, therefore, the boundaries of the precincts need to be altered to provide equal representation; and

WHEREAS, the Fremont County Board of County Commissioners on or about November 21, 2011 conducted a meeting on the proposed redistricting plan; and

WHEREAS, the redistricting plan considered by the Fremont County Board of County Commissioners would satisfy the requirements of one-person/one-vote by creating no district with a deviation of more than five percent (5%) above or below the ideal population; and

WHEREAS, the redistricting plan has been approved by the Fremont County Board of County Commissioners;

NOW, THEREFORE, BE IT RESOLVED by the Fremont County Board of County Commissioners as follows:

1. The boundaries of the three (3) commissioner districts for election of the Fremont County Board of Commissioners are altered to follow the lines depicted on the attached property descriptions and map entitled "Fremont County Commissioner District".

2. The boundaries of the thirteen (13) voter districts for elections held in Fremont County are altered to follow the lines depicted on the attached property descriptions and map entitled "Fremont County Voter Districts".

3. Where possible, easily identifiable geographic boundaries have been followed.

4. To the extent possible, districts are composed of whole voting precincts. Where this was not possible or practicable, precincts have been drawn in a way that permits the creation of practical voting precincts and ensures that adequate facilities for polling places exist in each voting precinct.

5. To the extent possible, precincts have been altered based on existing precincts.

6. Precincts have been composed of contiguous territory and are compact. Compactness may contain a function, as well as geographic dimension.

7. Consideration has been given to the preservation of incumbent-constituency relations by recognition of the residence of incumbents and their history in representing certain areas.

8. The maps referenced above have been prepared from United States Census Bureau maps and the boundaries have been drawn to follow census block lines. The maps referenced above show voting precincts and in each district for reference to resolve any issue that might arise concerning the boundaries of the district.

9. The new precinct boundaries shall be used for the next election of the Fremont County Board of County Commissioners and for each subsequent election until the boundaries are altered according to law.

10. A copy of the resolution, maps and voting precincts shall be retained in the office of the Clerk to the Fremont County Board of County Commissioners.

11. A certified copy of this resolution shall be filed with the Secretary of State, the Fremont County Recorder and the Fremont County Board of elections.

12. Copies of the maps depicting Fremont County Election District shall be provided to the Fremont County Board of Elections with the request that the board notify residents of Fremont County of changes in the precincts in which they vote.

13. Any prior resolution in conflict with this Resolution is hereby repealed.

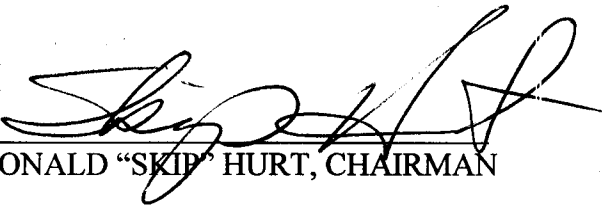
14. If any provision, section, subsection, sentence, clause, or phrase of this Resolution, or the application of same to any person or set of circumstances is for any reason held to be unconstitutional, void or invalid, the validity of the remaining portions of this Resolution or their application to other persons or sets of circumstances shall not be affected thereby, it being the intent of the Fremont County Board of County Commissioners in adopting this Resolution that no portion hereof or provision or regulation contained herein shall become inoperative or fail by reason of any unconstitutionality, voidness or invalidity of any other portion hereof, and all provisions of this Resolution are declared to be severable for that purpose.

This resolution shall be in full force and effect immediately upon adoption.

PASSED THIS 21 DAY OF November 2011, BY THE BOARD OF COUNTY COMMISSIONERS OF FREMONT COUNTY, IDAHO.

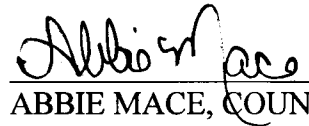
536860

BOARD OF COUNTY COMMISSIONERS  
FREMONT COUNTY, IDAHO



RONALD "SKIP" HURT, CHAIRMAN



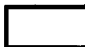
ATTEST:

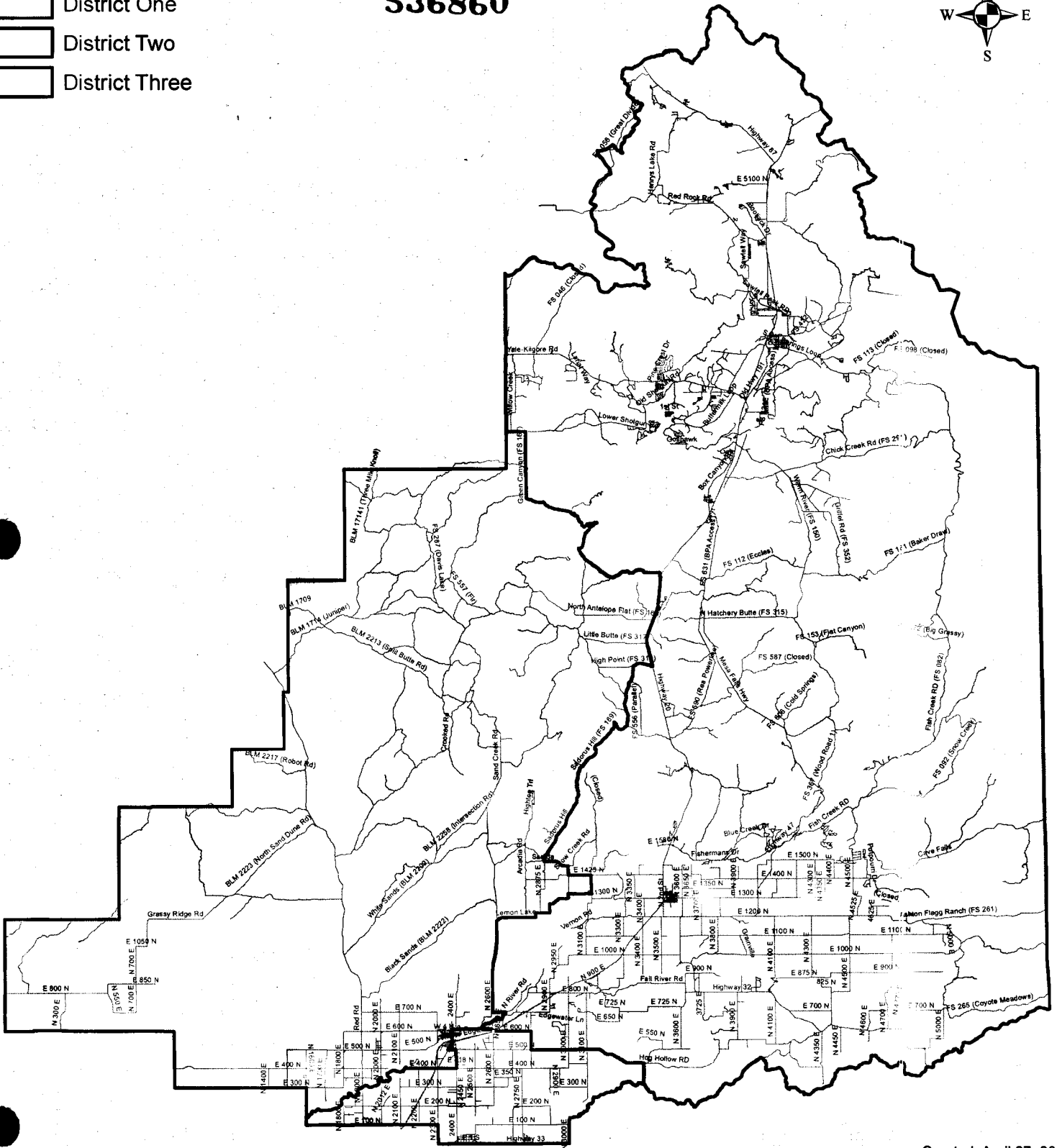


ABBIE MACE, COUNTY CLERK

Commissioner Districts 2010

536860

-  District One
-  District Two
-  District Three



## MEMO

To: Abbie Mace, County Clerk  
 From: Greg Newkirk, GIS Manager  
 Date: 4/26/2011  
 RE: Commissioner Redistricting for 2010

Based on the 2010 US Census, the following Census geography and legal description are proposed for the realignment of the Fremont County Commissioner Districts.

**Census Geography**

<u>District</u>	<u>Tracts</u>	<u>Blocks</u>
<b>District One</b>	970100	1000-1433, 1436, 1437, 1444-1461, 1463, 1464, 1466, 1467, 1557-1573, 1578-1734, 1745, 1784, 1785, 1788, 1792-1797, 1804-1811, 1878-1881, 1883-1907, 1909-1919, 1922-1925, 1927-1929, 1931-1991, 1994, 1996, 1996, 1997, 1999, 2000-2012
	970200	1000-1315, 2000-2101, 3000-3168, 3185-3187, 3190-3195, 3197-3239, 3244-3248, 3252-3256
	970300	2000-2057, 2069-2072, 2090-2094, 2102-2107, 2113-2116
<b>Total</b>		
<b>Population:</b>	<b>4,444</b>	
<b>District Two</b>	970200	3169-3184, 3188, 3189, 3196, 3240-3243, 3249-3251, 4000-4131
	970300	1009, 1015-1030, 1036-1082, 2058-2068, 2073-2089, 2095-2101, 2108-2112, 2117-2119, 3000-3027, 3036-3100, 6069, 6106, 6115, 6117, 6118, 7025, 7026, 7029, 7031-7043, 7047-7065, 7076, 7081, 7125-7141, 7144-7150
<b>Total</b>		
<b>Population:</b>	<b>4,448</b>	
<b>District Three</b>	970100	1434, 1435, 1438-1443, 1462, 1465, 1468-1556, 1574-1577, 1735-1744, 1746-1783, 1786, 1787, 1789-1791, 1798-1803, 1812-1877, 1882, 1908, 1920, 1921, 1926, 1930, 1985, 1992, 1993, 1995, 1998
	970300	1000-1035, 3028-3035, 4000-4080, 5000-5066, 6000-6068, 6070-6105, 6107-6114, 6116, 7000-7024, 7027, 7029, 7030, 7044, 7045, 7046, 7066-7075, 7077-7080, 7082-7124, 7142, 7143
<b>Total</b>		
<b>Population:</b>	<b>4,420</b>	

## Landmark Geography

District One: Beginning at a point on the Teton River (which is also the Fremont County Boundary) at an intersection with the alignment of N 3400 E, which is also the east line of Section 15, Township 7 North Range 42 East of the Boise Meridian and continuing thence easterly along the Teton River to the confluence of Bitch Creek and continuing easterly along Bitch Creek to the intersection of the eastern Fremont County Boundary, and continuing northerly and following said boundary to as it meanders to the west and south to the intersection of Lower Shotgun Road, then continuing easterly along said road to the intersection of Green Canyon Road, then continuing southerly and southeasterly along said road to the intersection of US Highway 20, then continuing southerly along said highway to the intersection with High Point Road and continuing westerly along said road to the intersection of Stock Road, then continuing southerly along said road to the intersection of South Antelope Flat Road, then continuing southerly along said road to the intersection of Sadorus Hill Road, then continuing southeasterly along said road to the intersection of Sarilda Road, then continuing easterly along said road to the intersection of N 3000 E, then continuing southerly along said road to the intersection of E 1425 N, then continuing easterly along said road to the intersection of N 3125 E, then continuing southerly along said road to the intersection of Lemon Lake Road, then continuing westerly along said road to the intersection of Sand Hill Road, then continuing southerly along said road to the intersection of N 2600 E, then continuing southerly along said road to the intersection of E 700 N, then continuing easterly along said road to the intersection of N River Road, then continuing southwestly along the Henry's Fork River to the intersection of E Yellowstone Highway, then continuing easterly along said road across US Highway 20 to the intersection of E 600 N, then continuing easterly along said road to the intersection of N 2800 E, then continuing southerly along said road to the intersection of an irrigation ditch that aligns with E 500 N, then continuing easterly along said ditch to the intersection of E 500 N, then continuing easterly along said road to the intersection of Hog Hollow Road, then continuing easterly along said road to a point that is approximately 1300 feet west of N 3425 E, this point also being immediately west of 3419 Hog Hollow RD and also being along the alignment of N 3400 E, which is also the east line of Section 15, Township 7 North Range 42 East of the Boise Meridian, and continuing southerly along said alignment to an intersection with the Teton River, which is the point of beginning.

District Two: Beginning at a point on the Henry's Fork River along the Fremont County Boundary, then continuing northeasterly along said river to a point that aligns with E 400 N, then continuing easterly along said road to an intersection with N 2400 E, then continuing northerly along said road to an intersection with E 500 N, then continuing westerly along said road to an intersection with an irrigation ditch that aligns with E 500 N and continuing westerly to the intersection of S Yellowstone Highway, then continuing

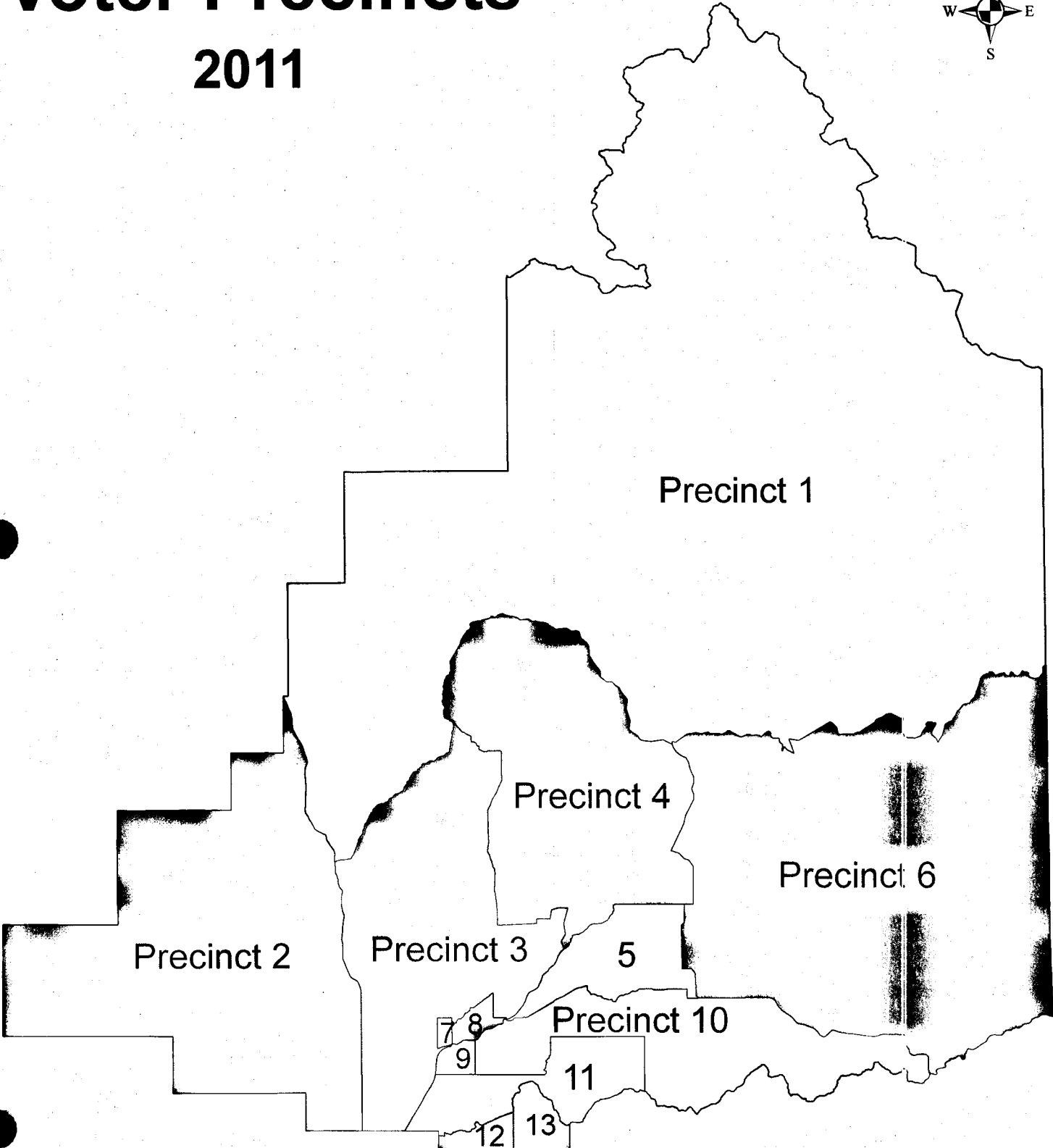
northeasterly along said road to an intersection with Bridge ST, then continuing northerly along said road to an intersection with E Yellowstone Highway, then continuing easterly to the intersection of E 600 N, then continuing easterly along said road to the intersection of N 2800 E, then continuing southerly along said road to the intersection of E 500 N, then continuing easterly along said road to the intersection of Hog Hollow Road, then continuing easterly along said road to a point that is approximately 1300 feet west of N 3425 E, this point also being immediately west of 3419 Hog Hollow RD and also being along the alignment of N 3400 E, which is also the east line of Section 15, Township 7 North Range 42 East of the Boise Meridian, and continuing southerly along said alignment to an intersection with the Teton River, then continuing southwesterly along said river and following the Fremont County Boundary back to the point of beginning.

**District Three:** Beginning at a point along the Fremont County Boundary at the intersection of Lower Shotgun Road, then continuing easterly along said road to the intersection of Green Canyon Road, then continuing southerly and southeasterly along said road to the intersection of US Highway 20, then continuing southerly along said highway to the intersection with High Point Road and continuing westerly along said road to the intersection of Stock Road, then continuing southerly along said road to the intersection of South Antelope Flat Road, then continuing southerly along said road to the intersection of Sadorus Hill Road, then continuing southeasterly along said road to the intersection of Sarilda Road, then continuing easterly along said road to the intersection of N 3000 E, then continuing southerly along said road to the intersection of E 1425 N, then continuing easterly along said road to the intersection of N 3125 E, then continuing southerly along said road to the intersection of Lemon Lake Road, then continuing westerly along said road to the intersection of Sand Hill Road, then continuing southerly along said road to the intersection of N 2600 E, then continuing southerly along said road to the intersection of E 700 N, then continuing easterly along said road to the intersection of N River Road, then continuing southwesterly along the Henry's Fork River to the intersection of E Yellowstone Highway, then continuing easterly along said road to an intersection with Bridge ST, then continuing southerly along said road to an intersection with S Yellowstone Highway, then continuing southerly along said road to the intersection of an irrigation ditch that aligns with E 500 N, then continuing easterly along said ditch to the intersection of E 500 N, then continuing along said road to the intersection of N 2800 E, then continuing southerly along said road to the intersection of E 400 N, then continuing westerly along said road to the intersection of the Henry's Fork River, then continuing southwesterly along said river to the intersection with the Fremont County Boundary, then continuing northerly and meandering to the point of beginning.



# Voter Precincts

2011



## MEMO

To: Abbie Mace, County Clerk  
From: Greg Newkirk, GIS Manager  
Date: 11/23/11  
RE: Voter District Legal Descriptions

Below are the legal descriptions for the thirteen (13) voter districts in Fremont County.

District One: Beginning at a point along the Fremont County Boundary that intersects the Red Road thence continuing northerly, westerly and southerly to its intersection with the Little Robinson Creek thence southwesterly following said creek to an intersection with an old wagon trail along the base of an upslope which is approximately 6800 feet in elevation and continuing westerly along said trail to its intersection with US Forest Service Road number 20094 also known as Snow Creek Butte Road thence southwesterly along said road to its intersection with US Forest Service Road number 20082 (now closed) also known as Moose Creek Butte Road thence meandering westerly along said road to its intersection with Moose Creek thence southwesterly along said creek to its intersection with Warm Springs thence westerly cross country to US Forest Service Road number 20154 also known as Warm River Springs Road and continuing westerly along said road to its intersection with US Forest Service Road number 20150 also known as Warm River Road thence continuing westerly along said road to its intersection with Mesa Falls Highway thence continuing southerly along said road to its intersection with US Forest Service Road number 20294 also known as Upper Mesa Falls Loop to its intersection with the Henry's Fork River thence following said river westerly to its intersection a trail that connects with US Forest Service Road number 20780 also known as Sheep Falls Trailhead thence continuing westerly to its intersection with US Forest Service Road number 20163 also known as Sheep Falls Road thence westerly along said road to its intersection with US Highway 20 thence continuing southerly along said highway to its intersection with US Forest Service Road number 20553 also known as South Antelope Flat Road thence continuing northwesterly along said road to its intersection with US Forest Service Road number 20557 also known as Fir Road thence continuing westerly along said road to its intersection with BLM Service Road number 2203 also known as Crooked Road thence continuing southerly along said road to its intersection with the Red Road thence continuing northwesterly along said road to the point of beginning.

District Two: Beginning at a point along the Fremont County Boundary that intersects Red Road thence continuing southerly along said road to its intersection with E 1900 N also known as the Salem Highway thence continuing southerly to its intersection with the Fremont County Boundary thence continuing westerly, northerly and easterly to its intersection with Red Road which is the point of beginning.

**District Three:** Beginning at a point on Red Road (where it intersects Crooked Road) thence continuing southerly along said road to its intersection with E 1900 N also known as the Salem Highway thence continuing southerly to its intersection with the Fremont County Boundary thence continuing easterly along said boundary to its intersection with US Highway 20 thence continuing northeasterly along said highway to its alignment to S 1 W in Saint Anthony thence northerly to the southern bank of the Henry's Fork River thence continuing northeasterly along said bank to Bridge Street thence reversing course and continuing southwesterly along said river to its alignment with S 12 W in Saint Anthony thence continuing northerly along said road to its intersection with N 2300 E thence continuing northerly along said road to its intersection with E 700 N thence continuing easterly along the alignment of E 700 N which is also the northern edge of section 36 of Township 8 North Range 40 East to the alignment of Bridge Street thence continuing southerly along said alignment to its intersection with the Last Chance Canal thence continuing westerly along said canal to its intersection with N 2400 E thence continuing northerly approximately 500 feet along said road to its intersection with an unnamed road thence traveling northeasterly along said unnamed road to its intersection with N 2600 E also known as the Sand Creek Road thence southerly along said road to its intersection with E 700 N thence continuing easterly along said road to its intersection with the Fun Farm Bridge Road thence continuing southerly along said road to its intersection with the Henry's Fork River thence traveling northeasterly along said river to its confluence with Sand Creek thence continuing northerly along said creek to its intersection with Lemon Lake Road thence continuing westerly along said road to its intersection with Sand Creek Road thence northerly along said road to its intersection with BLM Service Road number 2211 also known as Snowshoe Butte Road thence continuing approximately 1.5 miles easterly along said road to its intersection with an unnamed road thence continuing northwesterly along said unnamed road to its intersection with Crooked Road thence traveling southwesterly along said road to the point of beginning.

**District Four:** Beginning at a point on Crooked Road thence continuing southerly with an unnamed road (approximately 500 feet south of Hamilton Hill Road ) thence continuing southeasterly along said road to its intersection with BLM Service Road number 2211 also known as Snowshoe Butte Road thence continuing southerly and easterly along said road to its intersection with Sand Creek Road thence continuing southerly to its intersection with Lemon Lake Road thence continuing easterly along said road to its intersection with Sand Creek thence southerly along said creek to its confluence with the Henry's Fork River thence northeasterly along said river to its intersection with E 1300 N thence easterly along said road to its intersection with N 3650 E thence northerly along said road to its intersection with the Henry's Fork River thence continuing northwesterly along said river to its intersection with US Highway 20 thence continuing northerly along said highway to its intersection with US Forest Service Road number 20553 also known as South Antelope Flat Road thence continuing

northwesterly along said road to its intersection with US Forest Service Road number 20557 also known as Fir Road thence continuing westerly along said road to its intersection with BLM Service Road number 2203 also known as Crooked Road thence continuing southerly to its intersection with an unnamed road which is the point of beginning.

District Five: Beginning at a point known as the Fun Farm Bridge on the Henry's Fork River thence traveling northeasterly along said river to N 1300E thence continuing easterly along said road to its intersection with State Highway 32 thence continuing southerly along said highway to its intersection with N 800 E thence continuing westerly along said road to its intersection with N 3625 E thence continuing northerly to its intersection with Fall River Road thence continuing westerly to its intersection with N 3175 E thence continuing northerly to its intersection with a private unnamed road immediately north of the Falls River and continuing westerly along said road to its intersection with US Highway 20 thence continuing southwesterly along said highway to its intersection with N 700 E thence continuing westerly along said road to its intersection with South River Road thence continuing westerly along said road to its intersection with the Henry's Fork River at the Fun Farm Bridge which is the point of beginning.

District Six: Beginning at a point on Bitch Creek and continuing easterly along Bitch Creek to the intersection of the eastern Fremont County Boundary, and continuing northerly and following said boundary to its intersection with Little Robinson Creek thence southwesterly following said creek to an intersection with an old wagon trail along the base of an upslope which is approximately 6800 feet in elevation and continuing westerly along said trail to its intersection with US Forest Service Road number 20094 also known as Snow Creek Butte Road thence southwesterly along said road to its intersection with US Forest Service Road number 20082 (now closed) also known as Moose Creek Butte Road thence meandering westerly along said road to its intersection with Moose Creek thence southwesterly along said creek to its intersection with Warm Springs thence westerly cross country to US Forest Service Road number 20154 also known as Warm River Springs Road and continuing westerly along said road to its intersection with US Forest Service Road number 20150 also known as Warm River Road thence continuing westerly along said road to its intersection with Mesa Falls Highway thence continuing southerly along said road to its intersection with US Forest Service Road number 20294 also known as Upper Mesa Falls Loop to its intersection with the Henry's Fork River thence following said river westerly to its intersection a trail that connects with US Forest Service Road number 20780 also known as Sheep Falls Trailhead thence continuing westerly to its intersection with US Forest Service Road number 20163 also known as Sheep Falls Road thence westerly along said road to its intersection with US Highway 20 thence continuing southerly along said highway to its intersection with the Henry's Fork River thence continuing easterly along said river to its intersection with N 3500 E thence continuing southerly along said road to its

intersection with E 1300 N also known as State Highway 47 thence continuing westerly along said road to its intersection with State Highway 32 thence continuing southerly and easterly along said highway to its intersection with Bitch Creek which is the point of beginning.

**District Nine:** Beginning at a point on US Highway 20 (at its intersection with E 400 N) thence continuing northerly along said Highway thence continuing northeasterly along said highway to its alignment to S 1 W in Saint Anthony thence northerly to the southern bank of the Henry's Fork River thence continuing northeasterly along said bank to Bridge Street thence continuing northeasterly along said river to its alignment with N 2500 E thence continuing southerly along said alignment and road to its intersection with E 400 N thence continuing westerly along said road to the point of beginning.

**District Ten:** Beginning at a point on the Teton River (which is also the Fremont County Boundary) at an intersection with the alignment of N 3400 E, which is also the east line of Section 15, Township 7 North Range 42 East of the Boise Meridian and continuing thence easterly along the Teton River to the confluence of Bitch Creek and continuing easterly to its intersection with State Highway 32 thence continuing northerly and westerly along said highway to its intersection with E 800 N thence continuing westerly along said road to its intersection with N 3625 E thence continuing northerly to its intersection with Fall River Road thence continuing westerly to its intersection with N 3175 E thence continuing northerly to its intersection with a private unnamed road immediately north of the Falls River and continuing westerly along said road to its intersection with US Highway 20 thence continuing southwestly along said highway to its intersection with N 700 E thence continuing westerly along said road to its intersection with South River Road thence continuing westerly along said road to its intersection with the Henry's Fork River thence continuing southwestly along said river to its alignment with N 2500 E thence continuing southerly along said alignment and road to its intersection with E 400 N thence continuing easterly along said road to its intersection with the Enterprise Canal thence continuing northerly along said canal to its intersection with E 500 N thence continuing northerly and easterly along the western and northern edges of Section 1 of Township 7 North Range 41 East and continuing easterly along the northern edge of sections 6, 5, 4 and 3 of Township 7 North Range 42 East thence continuing southerly along the eastern edge of said section 3 and continuing southerly along the eastern edge of sections 10 and 15 of said township to its intersection with the Teton River which is the point of beginning.

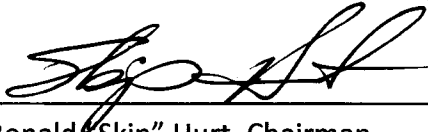
**District Eleven:** Beginning at a point on US Highway 20 (at its intersection with the Fremont County Boundary) thence continuing northerly along said Highway thence continuing northeasterly along said highway to its intersection with E 400 N thence continuing easterly along said road to its intersection with the Enterprise Canal thence continuing northerly along said canal to its intersection with E 500 N thence continuing northerly

and easterly along the western and northern edges of Section 1 of Township 7 North Range 41 East and continuing easterly along the northern edge of sections 6, 5, 4 and 3 of Township 7 North Range 42 East thence southerly along the eastern edge of said section 3 and continuing southerly along the eastern edge of sections 10 and 15 of said township to its intersection with the Teton River thence continuing westerly along said river to the Fremont County Boundary thence continuing northerly and westerly along said boundary to the point of beginning.

District 12: Beginning at a point at the intersection of N 2300 E and State Highway 33 thence continuing easterly along said highway and following the Fremont County Boundary to the intersection of N 2700 E and State Highway 33 thence continuing northerly along said road to its intersection with the Teton River thence continuing southwesterly along said river to its intersection with N 2300 E thence continuing southerly along said road to the point of beginning.

District 13: Beginning at a point at the intersection of N 2700 E and State Highway 33 thence continuing northerly along said road to its intersection with the Teton River thence continuing northeasterly and meandering along said river to its intersection with the County Boundary thence continuing southerly along said boundary to its intersection with N 3000 E and continuing southerly along said road to its intersection with State Highway 33 thence continuing westerly along said highway to the point of beginning.

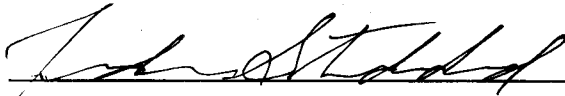
Duly approved, passed and adopted this 21st day of November, 2011, by the BOARD OF COUNTY COMMISSIONERS:



Ronald "Skip" Hurt, Chairman

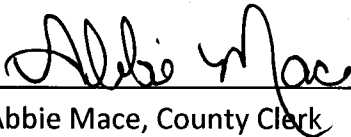


Lee Miller, Commissioner



Jordan Stoddard, Commissioner

ATTEST:



Abbie Mace, County Clerk

