

# Fremont County Irrigated Ag Land Suitability

Map 2.6



**Highways**

**LAYER**

- US
- STATE
- Other Highways
- County Maintained Road
- Water/Lake
- Rivers
- County Boundary
- Planning Area
- Impact Area
- Subdivisions
- Projected Growth Area
- Incorporated Townsite
- Public Lands

**Irrigated Ag Suitability**

**Class**

- Base
- More
- Most

**Potential Irrigated Crop Yield (Component)**

**(Barley/Bu, 15% cutoff), (Weighted Average)**

- Base <= 50.00
- More > 50.00 AND <= 72.00
- Most > 72.00 AND <= 100.00

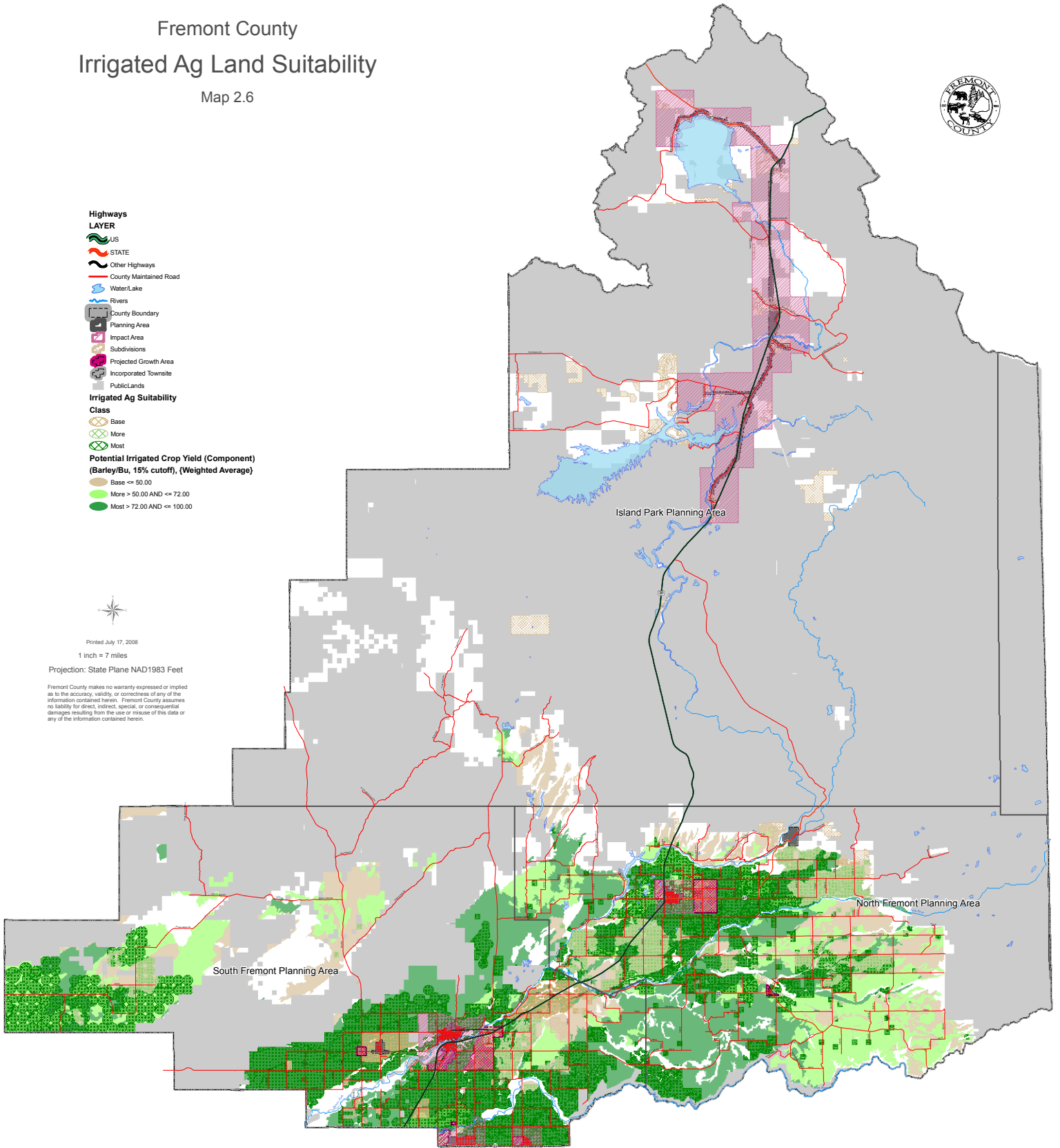


Printed July 17, 2008

1 inch = 7 miles

Projection: State Plane NAD1983 Feet

Fremont County makes no warranty expressed or implied as to the accuracy, validity, or correctness of any of the information contained herein. Fremont County assumes no liability for direct, indirect, special, or consequential damages resulting from the use or misuse of this data or any of the information contained herein.



**Note\***  
This map was created by selecting Areas on Ag Suitability layer that fell in a Subdivision, Projected Growth Area or Impact Area. If so the Ag Suitability class or score was bumped down one level. Also deleted any area from the Ag Suitability layer that fell in an Incorporated Townsite.

