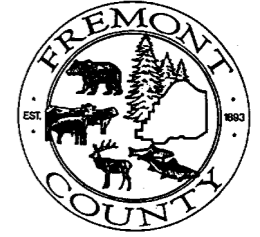
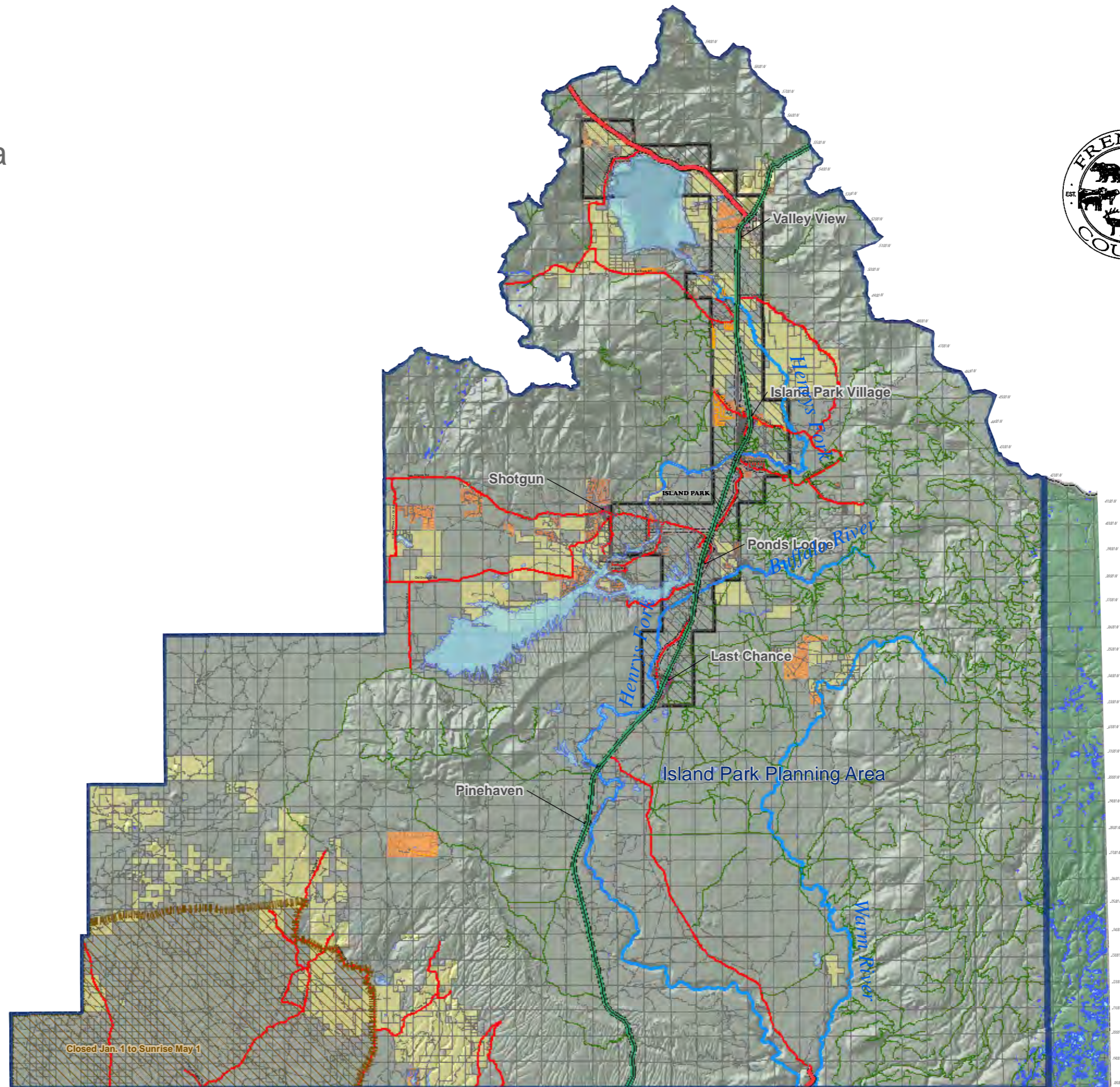


Fremont County Preferred Land Use Island Park Planning Area

Map 2.9a



- | | |
|----------------------------------|----------------------|
| Land Use Zone | Highways Type |
| National Park | US |
| Public Land | STATE |
| Rural | Other Highways |
| Rural Infill | |
| Rural Village (project specific) | Roads Type |
| Commercial / Industrial | County |
| County Boundary | City |
| City Limits | Private |
| Impact Area | US Forest |
| Subdivision | Unclassified |
| Planning Area | |
| Lake/Water | |
| Rivers | |
| Wetlands | |



Printed January 15, 2009 by B. Moore

1 inch = 4.25 miles

Projection: State Plane NAD1983 Feet

Fremont County makes no warranty expressed or implied as to the accuracy, validity, or correctness of any of the information contained herein. Fremont County assumes no liability for direct, indirect, special, or consequential damages resulting from the use or misuse of this data or any of the information contained herein.

Closed Jan. 1 to Sunrise May 1