

# Fremont County Range Land Suitability

Map 2.8



- Highways**
- Type**
- US
  - STATE
  - Other Highways
  - County Maintained Road
- Water/Lake  
Rivers
- Planning Area  
Projected Growth Area  
Subdivisions  
Impact Area  
City  
Public Lands
- Rangeland Suitability Class**
- Base
  - More
  - Most
- Range Land Productivity Type**
- Base <= 675
  - More > 675 and <= 1500
  - Most >1501

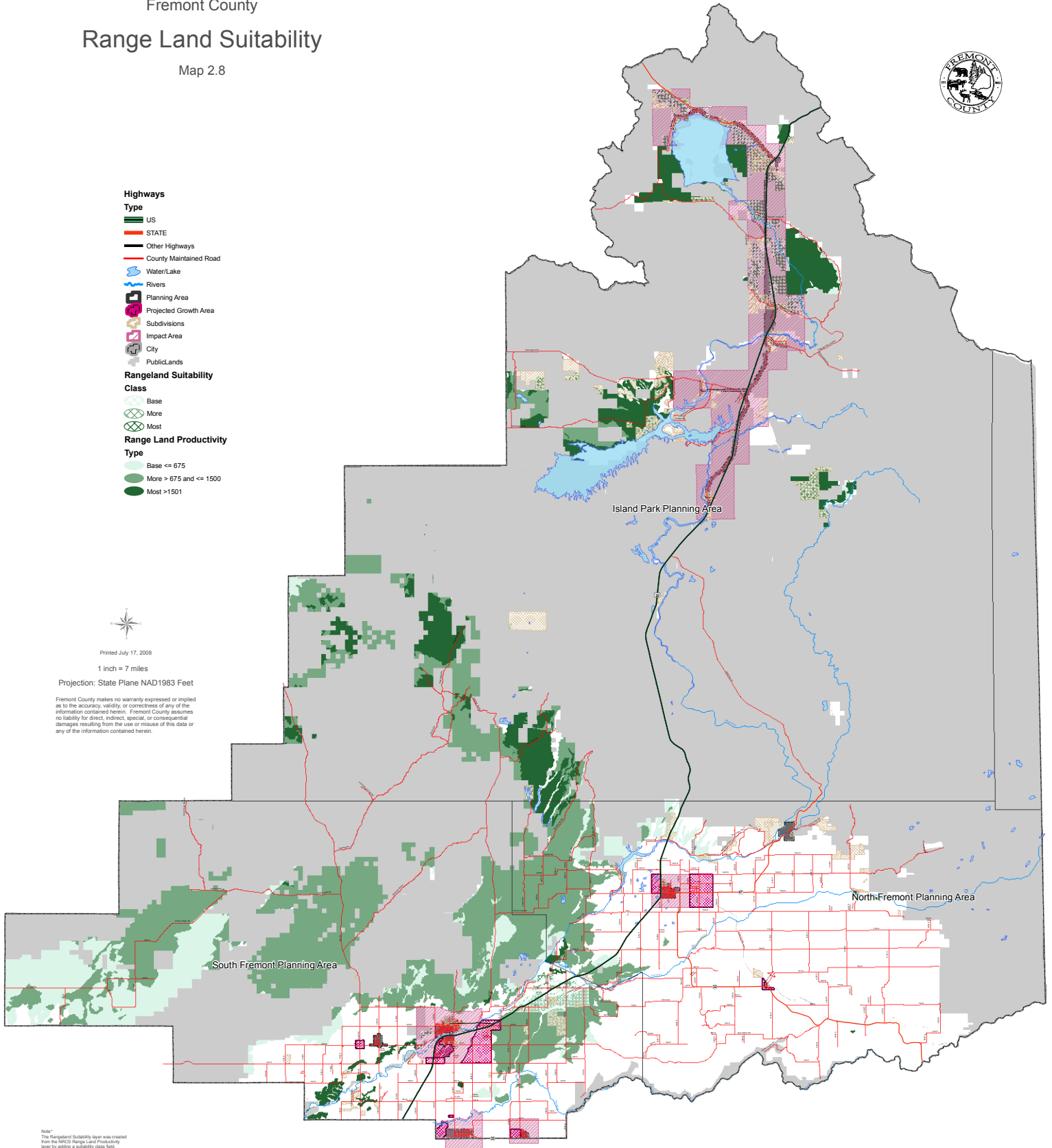


Printed July 17, 2008

1 inch = 7 miles

Projection: State Plane NAD1983 Feet

Fremont County makes no warranty expressed or implied as to the accuracy, validity, or correctness of any of the information contained herein. Fremont County assumes no liability for direct, indirect, special, or consequential damages resulting from the use or misuse of this data or any of the information contained herein.



Note:  
The Rangeland Suitability layer was created from the NRCS Range Land Productivity layer by adding a suitability class field. The suitability class was determined from the "HighlyProductive" field which was summarized by equidistant, graduated color, raster or breaks classification using 3 classes. If the Ripley's was less than or equal to 675 it was given a suitability class of 1, greater than 675 but less than 1500 class was 2, if greater than 1501 it was assigned as 3. 1 = Base, 2 = More, 3 = Most. If it was inside of the Projected Growth Area, Subdivision, or Impact area the classification was bumped down to 1.